



Flat 2, 23 Oaten Hill,
Canterbury, Kent, CT1 3HY



An upper floor flat set in an impressive period building on the edge of the City centre. The property is attractively presented and includes a good size reception room, well-equipped kitchen and bedroom with en-suite shower room. The property has a pleasant outlook over the neighbouring church. There is an intercom system to the front door and use of a purpose-built communal bike rack.

The City centre is within a few minutes' walk and offers extensive amenities including a wide range of shops, recreational facilities, schools, colleges and universities. Both railway stations are easily accessible with Canterbury West having high speed services to London St. Pancras with a journey time of approx. 55mins.

£850pcm
Unfurnished

Council Tax Band: B

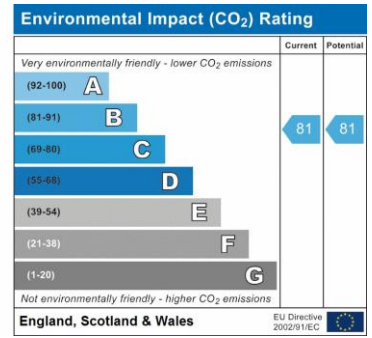
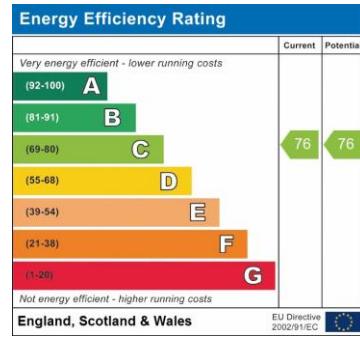
No pets. No smokers.

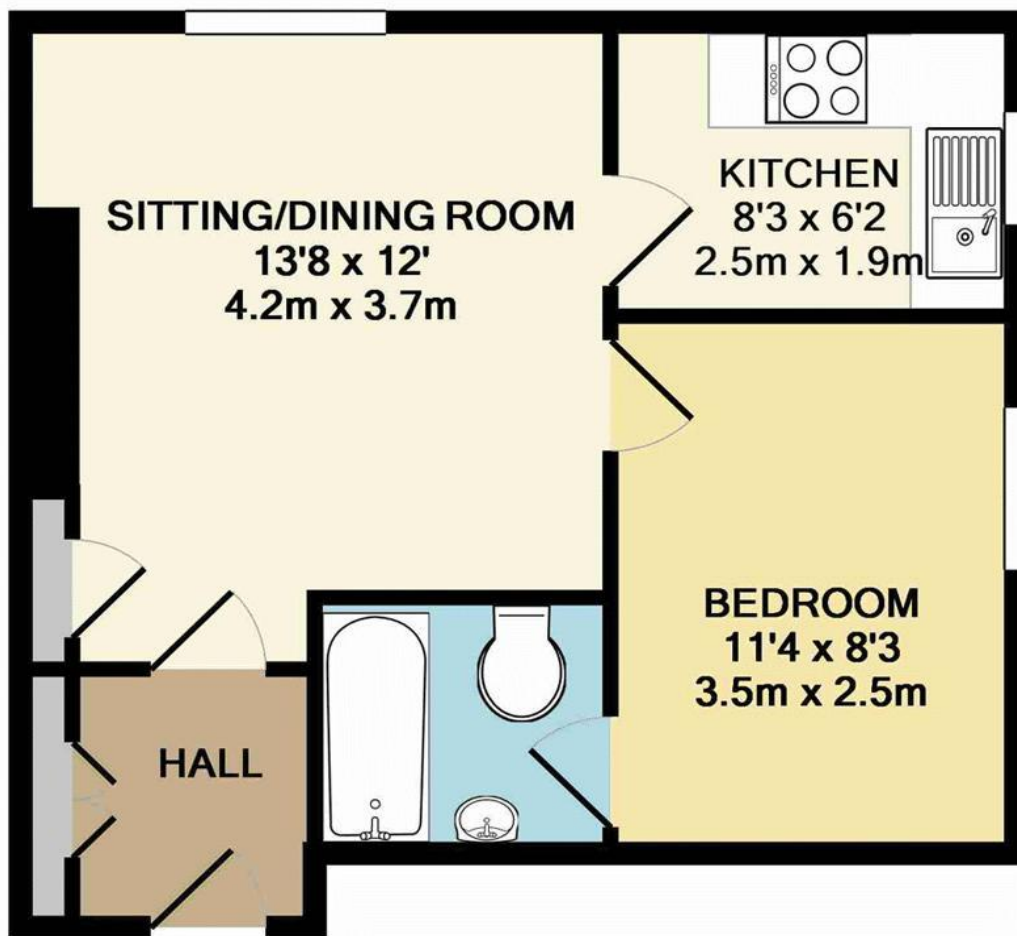
Security Deposit £980

One month's rent in advance

£196 (1 week's rent) to reserve the property

Managed by Landlord





Whilst every attempt has been made to ensure the accuracy of the floor plan contained here, measurements of doors, windows, rooms and any other items are approximate and no responsibility is taken for any error, omission, or mis-statement. This plan is for illustrative purposes only and should be used as such by any prospective purchaser. The services, systems and appliances shown have not been tested and no guarantee as to their operability or efficiency can be given
Made with Metropix ©2015

We would be pleased to arrange a viewing by appointment; simply call
01227 780227
or email
lettings@charlesbainbridge.com



Should you require any specific clarification about any part of the property or its surroundings prior to booking a viewing, particularly before travelling a significant distance to view, then please contact us and we would be pleased to assist.

These particulars are intended to give a fair description of the property, their accuracy cannot be guaranteed and they do not constitute an offer of contract. No appliances or services have been tested by us. Interested parties are advised to rely on their own inspection of the property and those of their professional and legal representatives before entering a contract to purchase.



1 The Bakery, 47 Broad Street,
Canterbury, Kent CT1 2LS
01227 780227
lettings@charlesbainbridge.com
charlesbainbridge.com